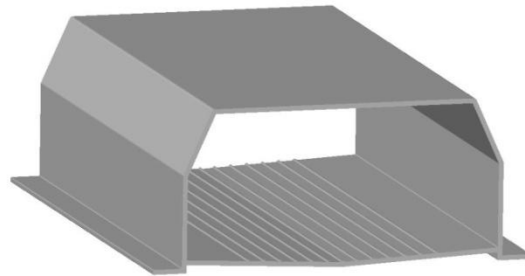


100 x 50 NFT Gully

Hydroponically grow

- lettuce
- basil
- bok choy
- chives
- strawberries



and much more fresh produce

- **One piece design**
This gully is designed as a one-piece system that gives much greater torsion strength. No lids to come off, no risk of crop loss
- **Angled tops**
The angled tops of the gullies are ideal when automated picking machines are utilized. Angled top allows the machine close access to the plant
- **Integrated mounting tabs**
No additional costly mounting components are needed- just screw through the base tabs and into the benches
- **Dished, grooved trough**
The dished grooved design eliminates pooling of nutrient solution and allows better flow.
- **Premium plastic construction**
You can be sure that this gully will continue to serve you well for many years. Manufactured from high impact, UV stabilized rigid PVC. The plastic has been specially formulated to have long life in Australian conditions