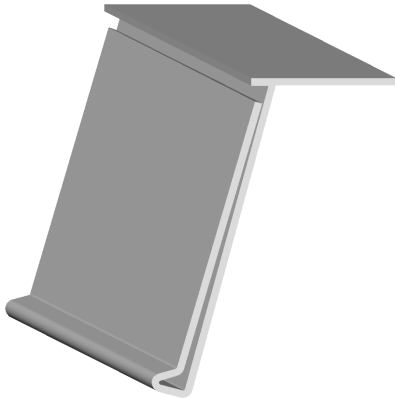


# Pacer Profiles Pty Ltd

“experts in plastic extrusion”

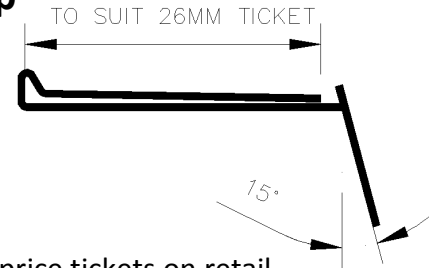
Ph- 08 8288 7711  
e-mail- info@pacerprofiles.com.au

Fax 08 8288 7719  
www.pacerprofiles.com.au



## Product Specification

### 26mm Top Mount Angle Data Strip



**Description-** This Clear or Clear/Coloured extrusion is used for holding price tickets on retail shelving, usually glass shelves in a pharmacy or similar. Designed to hold a 26mm price ticket, this extrusion has a high strength 9mm double-sided adhesive tape applied to the underside of the angled portion to enable ease of fitment to shelving. Clear front enables no-fuss scanning of tickets

**Material-** Rigid PVC

**Standard Colours-** Clear

Custom colours can be matched to corporate colour scheme (minimum order quantities apply)

**Standard length-** 914mm, 1200mm

Custom lengths can be cut on line to order.

**Packing Method-** white cartons

**Number per pack-** 50 pieces per carton

**Weight per pack-** 5 kg

**Related product of interest-** J-Strip, Hinged Adaptor, Shelf Talker Clip.

### Order Code

Eg 26 x 1200mm clear 15° Top Mount Angle					
Size (mm)		Colour	Length	Angle	Order Code
26	SC	----	1200	15° from vertical	26SC-AN15-1200
Eg 26 x 1200mm black (colour) 15° Top Mount Angle					
26	DC	BK	1200	15° from vertical	26DCBK-AN15-1200

Colour Codes – Red (RD), Grey (GY), White (WH), Yellow (YW), Black (BK), Blue (BU)

**Made in Australia**